

EMMANUEL CATHOLIC CHURCH PLAT TWO

A REPLAT OF EMMANUEL CATHOLIC CHURCH (PLAT BOOK 58, PAGE 151)
AND A PORTION OF THE SOUTHWEST ONE-QUARTER OF SECTION 24, TOWNSHIP 46 SOUTH, RANGE 42 EAST
CITY OF DELRAY BEACH, PALM BEACH COUNTY, FLORIDA

PREPARED BY
DAVID P. LINDLEY, P.L.S.
CAULFIELD & WHEELER, INC.
7301A WEST PALMETTO PARK ROAD, SUITE 100A
BOCA RATON, FLORIDA 33433
(407)391-1991

136

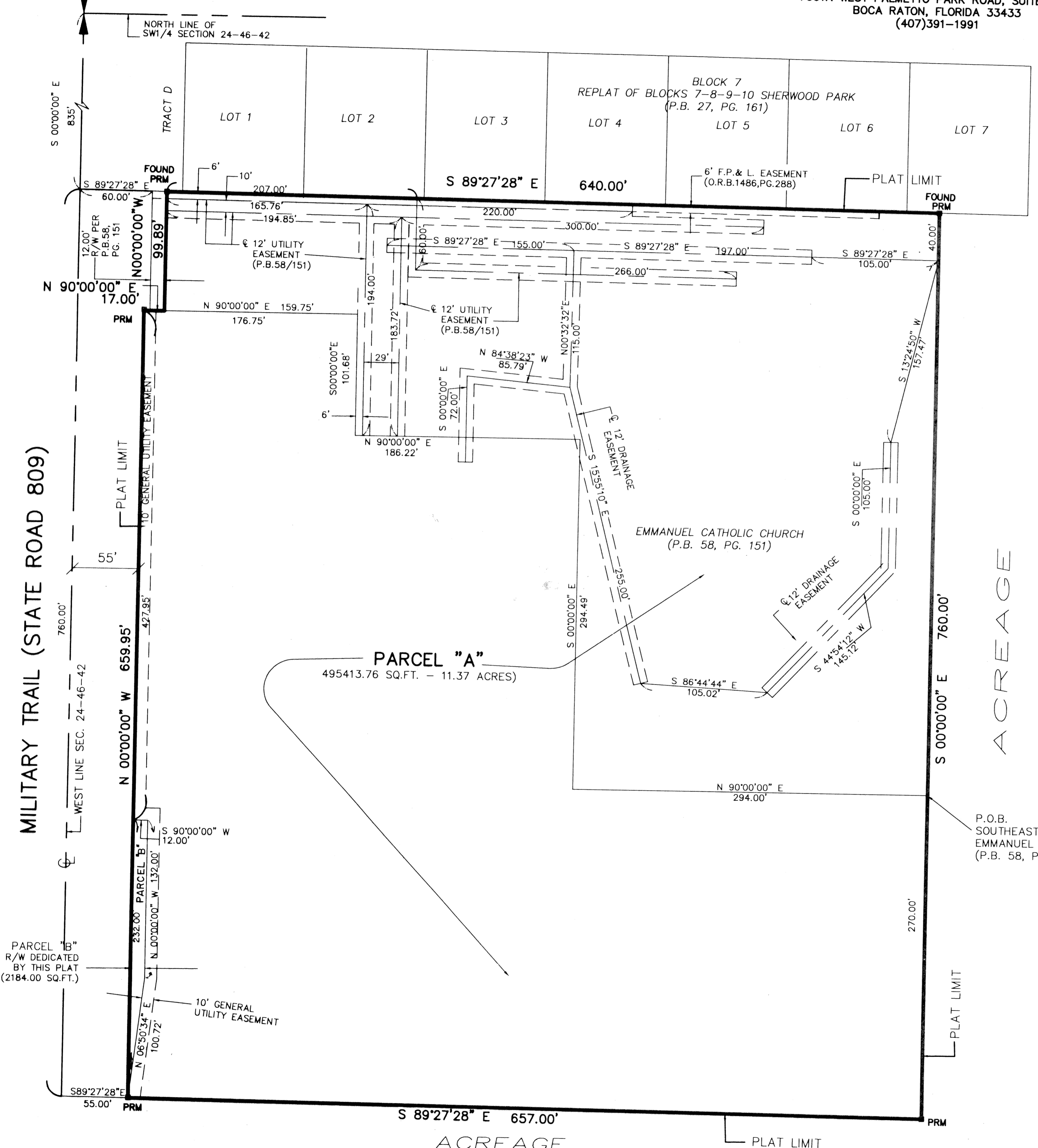
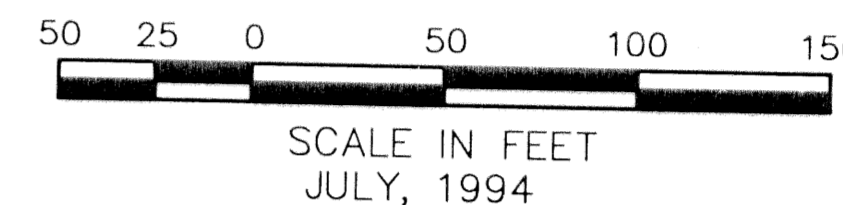
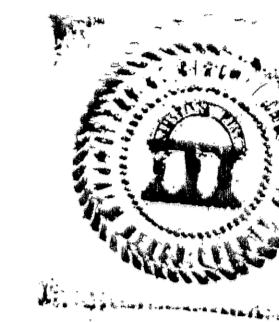
STATE OF FLORIDA
COUNTY OF PALM BEACH

THIS PLAT WAS FILED FOR
RECORD AT .M. THIS
DAY OF
1995, AND DULY RECORDED
IN PLAT BOOK ON
PAGES &

CLERK OF THE
CIRCUIT COURT

BY: _____

SHEET 2 OF 2



- In those cases where easements of different types cross or otherwise coincide, drainage easements shall have first priority; utility easements shall have second priority; access easements shall have third priority; and all other easements shall be subordinate to these with their priorities being determined by use rights granted.
- Building setback lines shall be as required by current City of Delray Beach Zoning Regulations.
- No buildings or any kind of construction shall be placed on utility or drainage easements.
- No structures, trees or shrubs shall be placed on drainage easements or utility easements which are provided for water and sewer use.
- Approval of landscaping on utility easements, other than water and sewer, shall be only with approval of all utilities occupying same.
- Bearings shown hereon are based on the plat EMMANUEL CATHOLIC CHURCH with the West boundary line of Section 24 having a bearing of S00°00'00"E
- Abbreviation Legend:
 - PRM Indicates Set Permanent Reference Monument #5005 unless noted otherwise
 - CL Indicates centerline
 - P.O.B. Indicates Point of Beginning
 - P.B.,Pg. Indicates Plat Book and Page
 - Sec. Indicates Section
 - R/W Indicates right-of-way
 - Sq.Ft. Indicates square feet
- There may be additional restrictions that are not recorded on this Plat that may be found in the public records of Palm Beach County, Florida.
- The City of Delray Beach shall have the right of access for emergency and maintenance purposes within the limits of this subdivision.

SUBDIVISION *EMMANUEL CATHOLIC CHURCH
BOOK 77 PAGE 136
FLOOD ZONE - FLOOD MAP *
QUAD * - ZONING -
SE - ZIP CODE -
PUD NAME CITY OF DELRAY BEACH